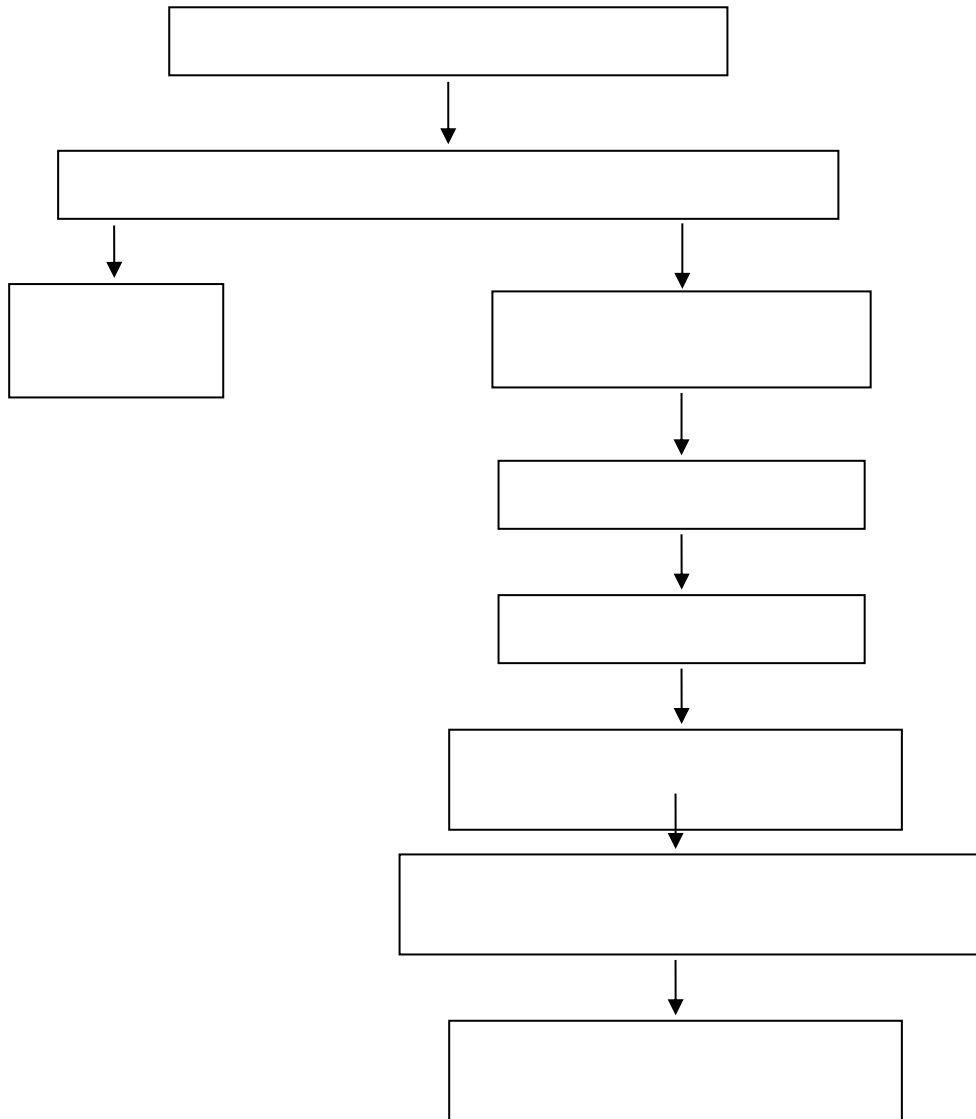


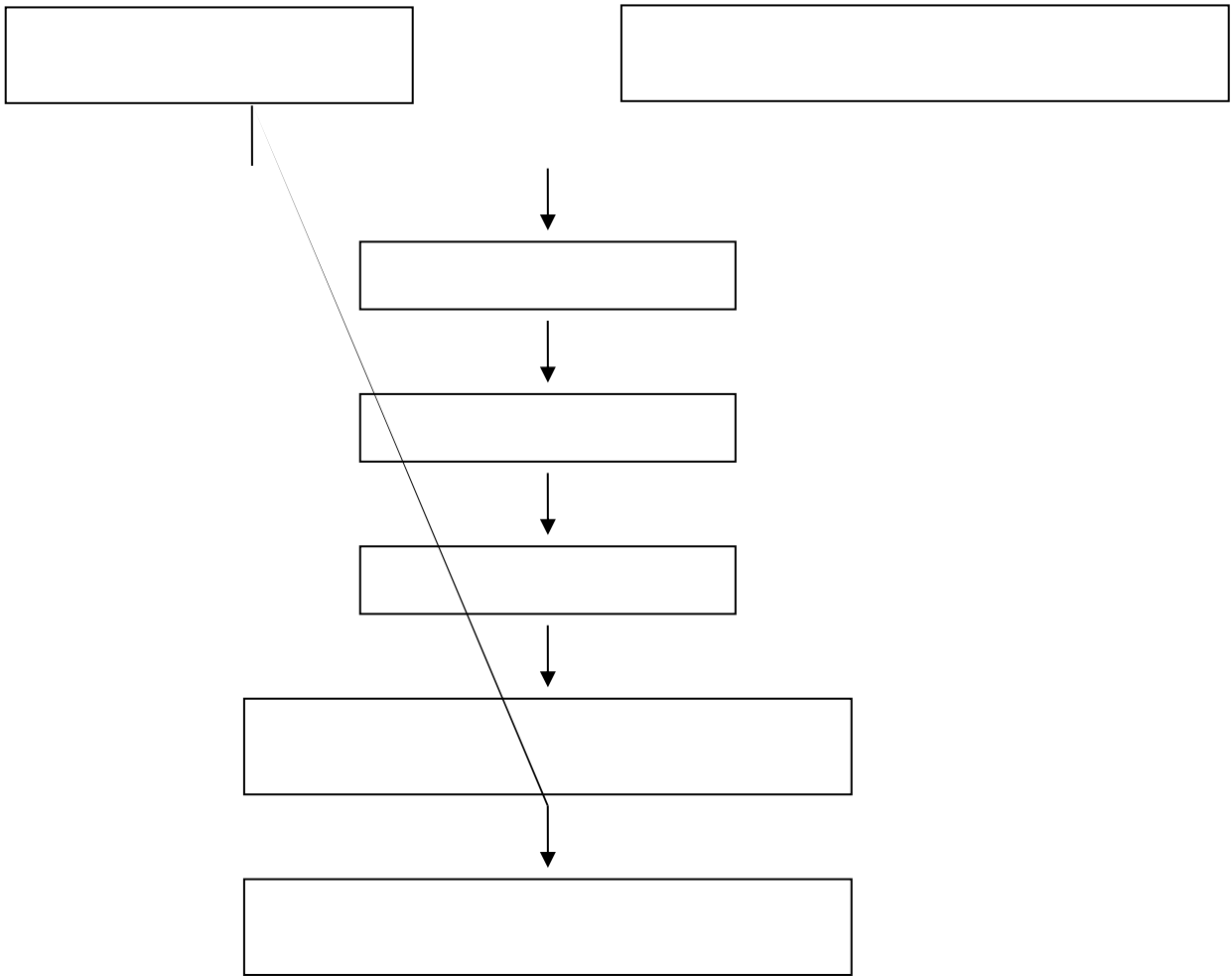
目 录

| | | |
|----|--|--|
| | | |
| 1 | | |
| 2 | | |
| 3 | | |
| 4 | | |
| 5 | | |
| 6 | | |
| 7 | | |
| 8 | | |
| 9 | | |
| 10 | | |
| 11 | | |
| 12 | | |
| 13 | | |
| 14 | | |
| 15 | | |
| 16 | | |
| 17 | | |
| 18 | | |
| 19 | | |
| 20 | | |
| 21 | | |
| 22 | | |
| 23 | | |
| 24 | | |
| 25 | | |
| 26 | | |
| 27 | | |
| 28 | | |
| 29 | | |
| 30 | | |

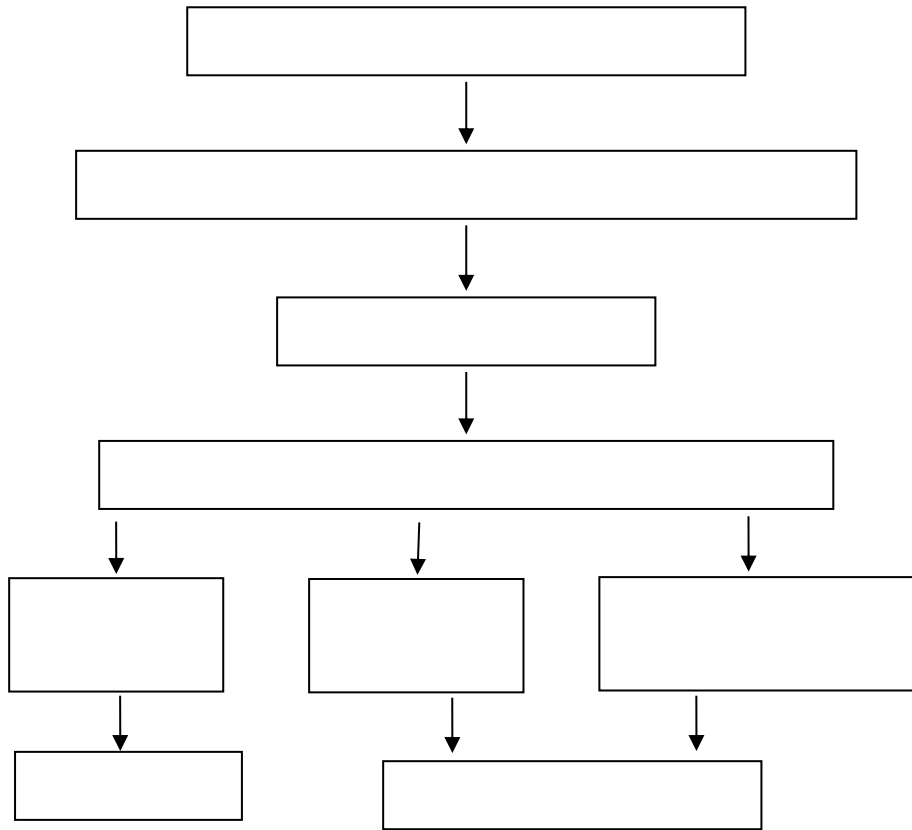
学生转专业管理流程



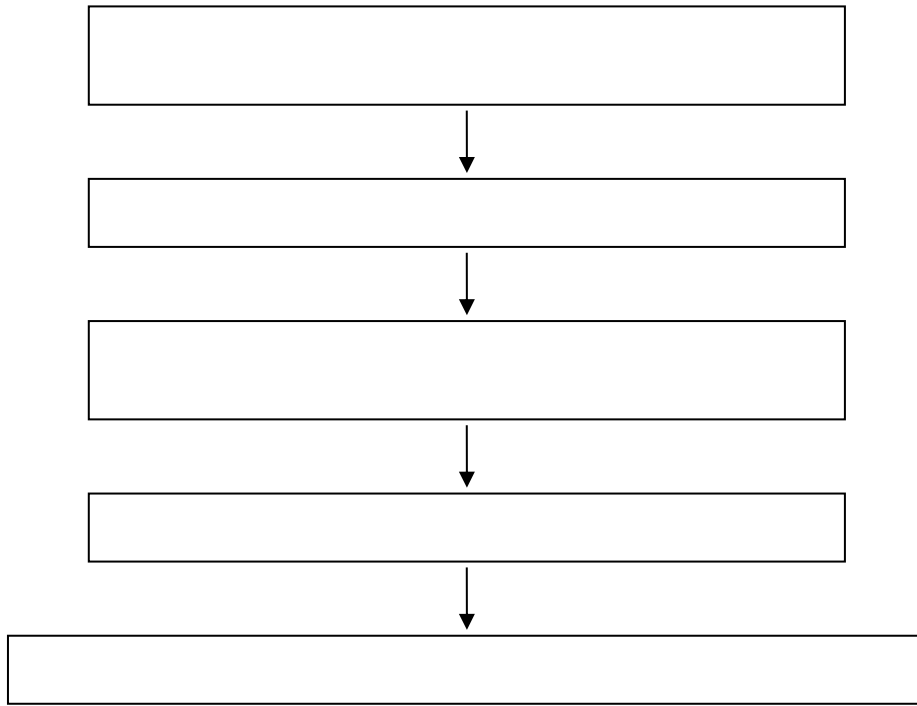
学生退学管理流程图



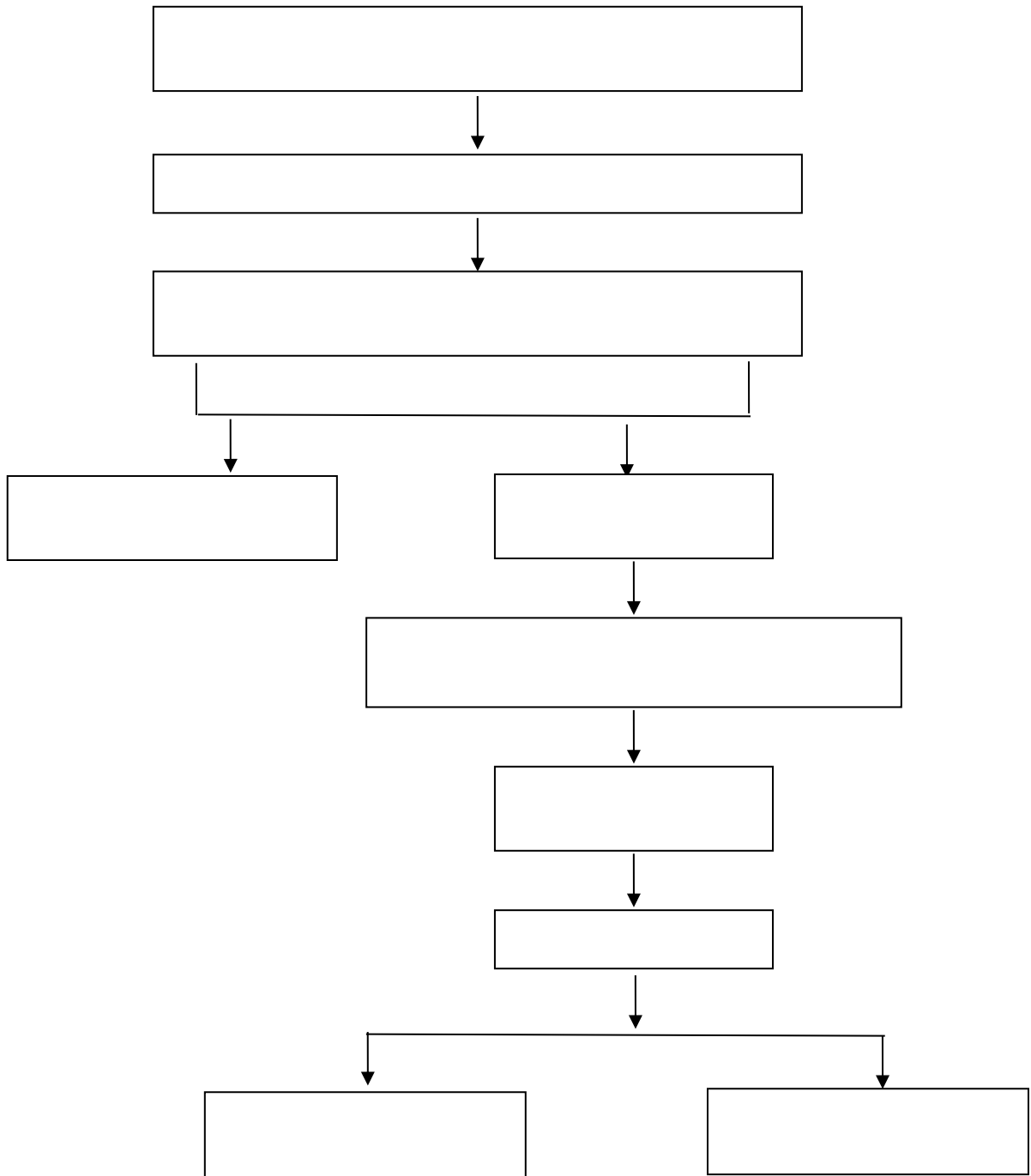
学生休学、保留学籍、复学、重新编级流程



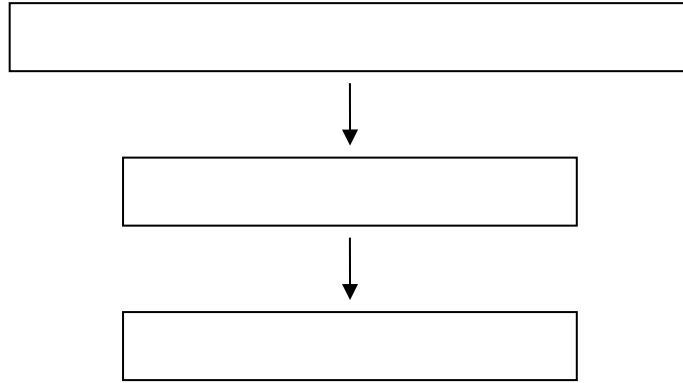
学生课程重新学习管理流程



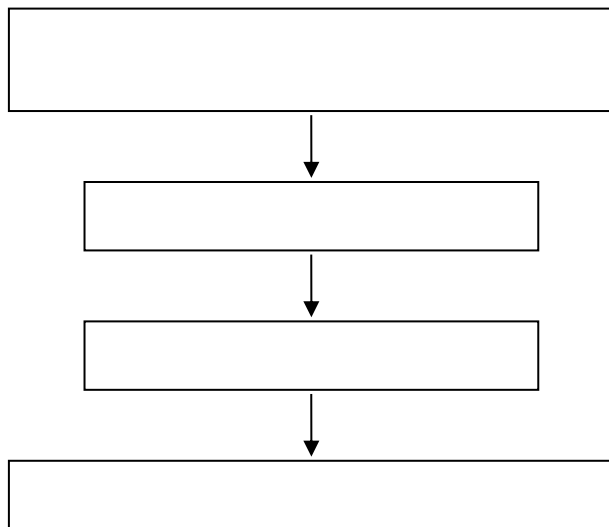
成绩管理流程



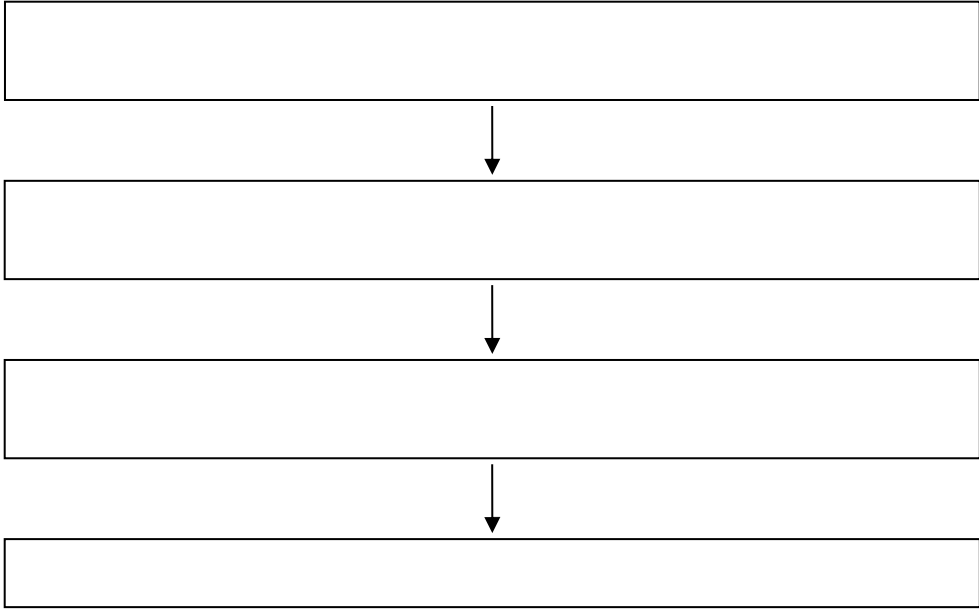
学生课程缓考管理流程



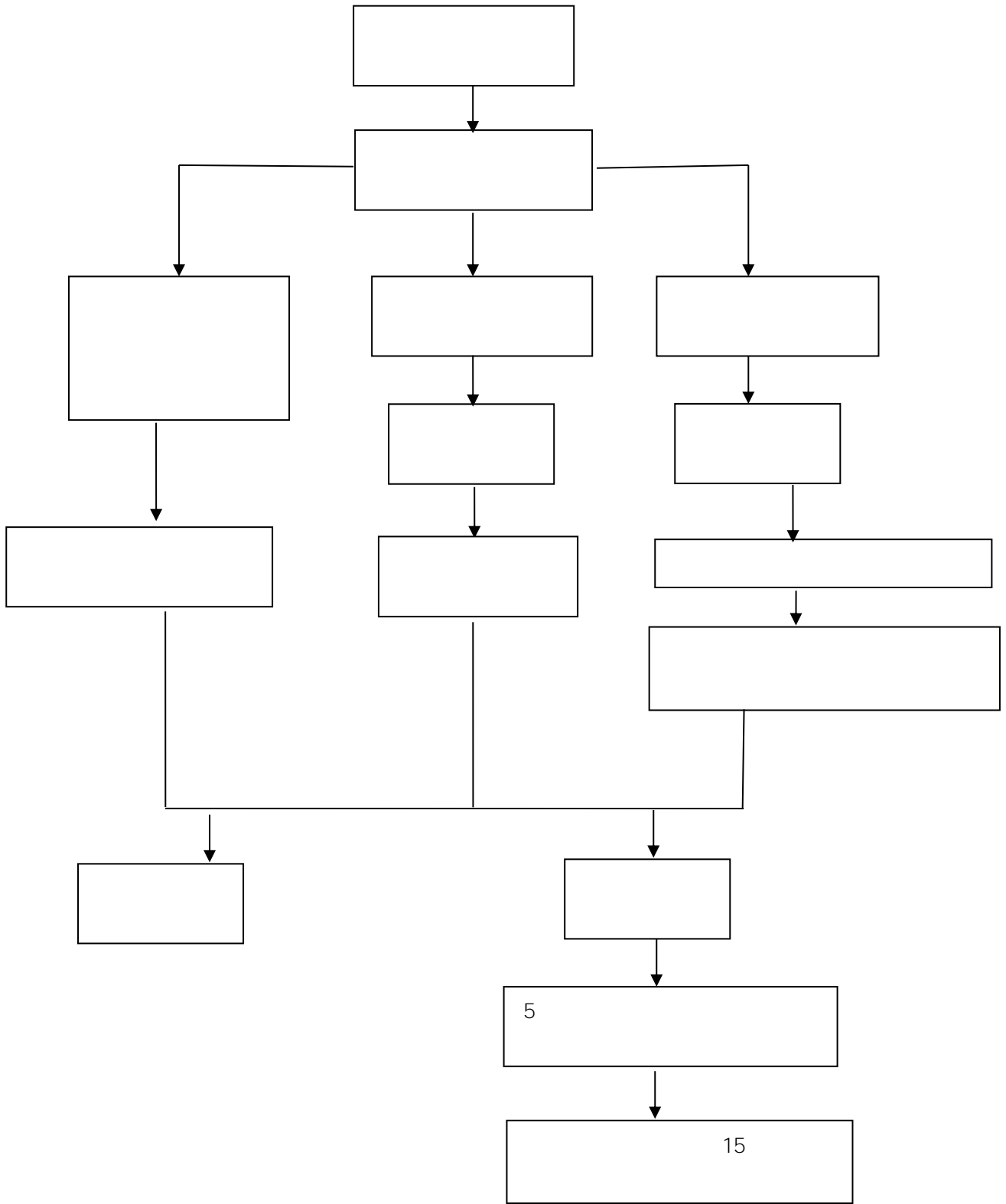
交流生学分认定办理流程



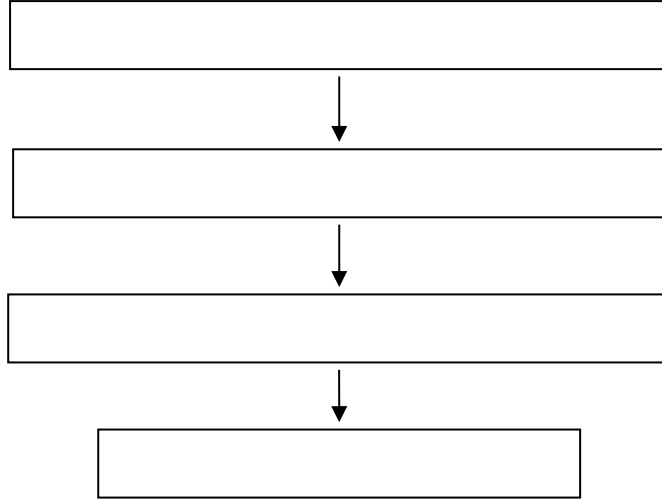
学生申请创新学分办理流程



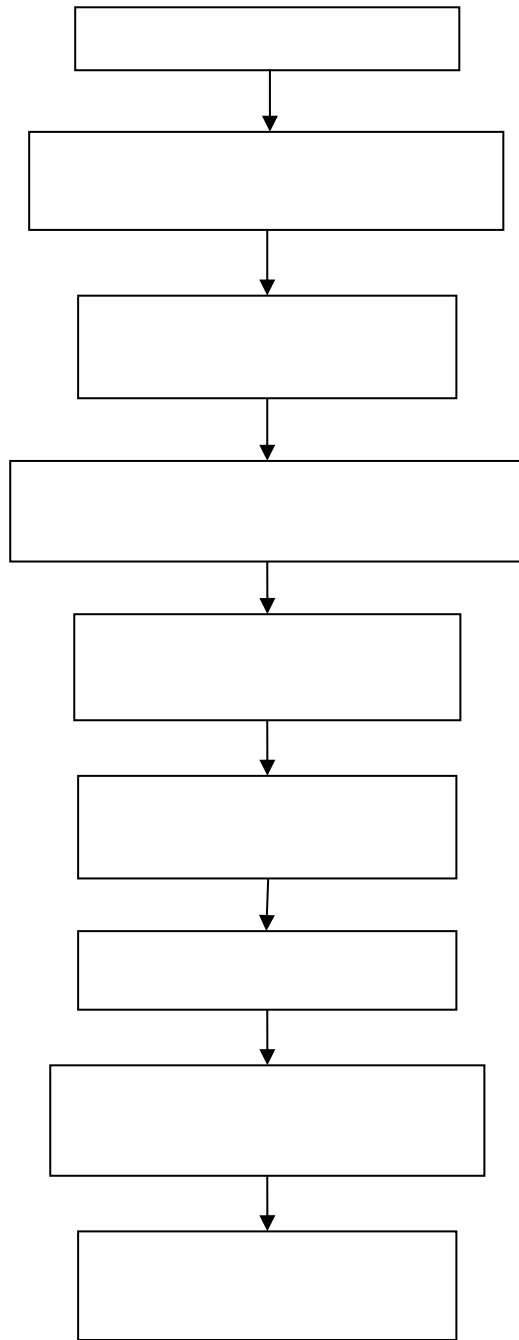
学生考试违纪处分流程图



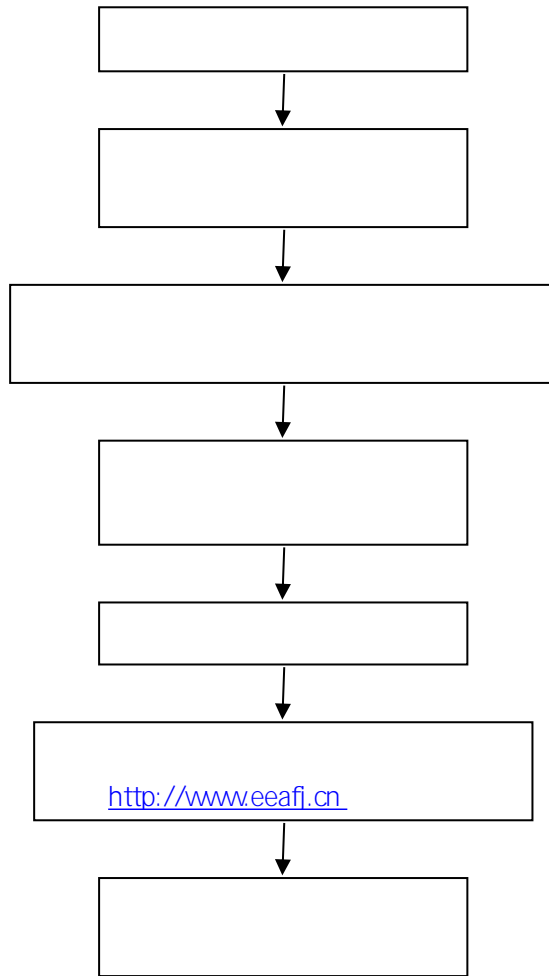
公共课程试卷送印流程



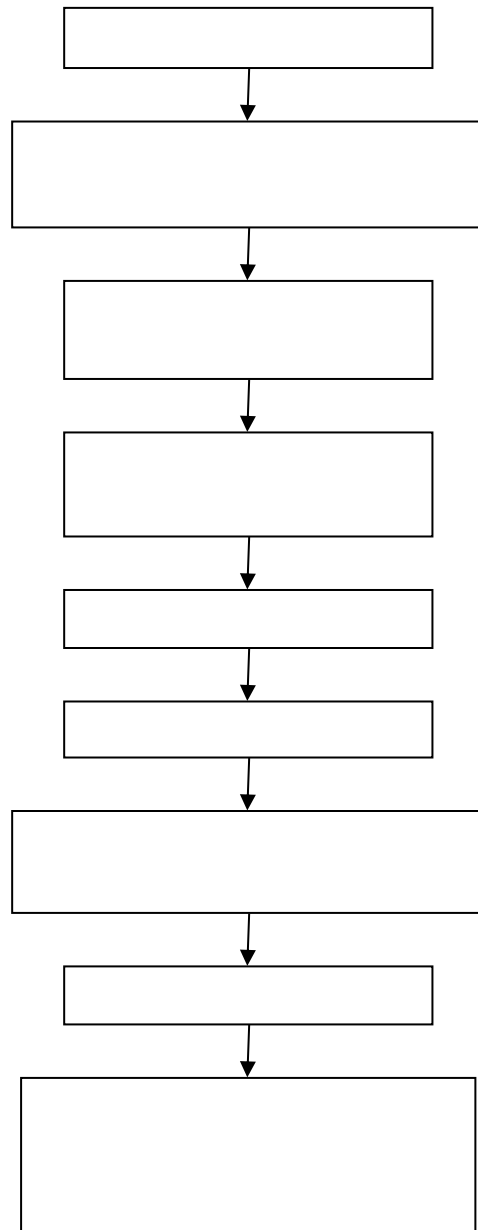
大学英语四、六级考试流程



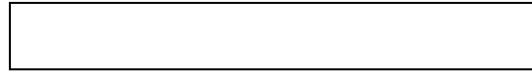
全国计算机等级考试流程



福建省高校计算机等级考试流程



课程表编排流程图



公共选修课报课、选课流程图

时间安排

教师报课

学生选课

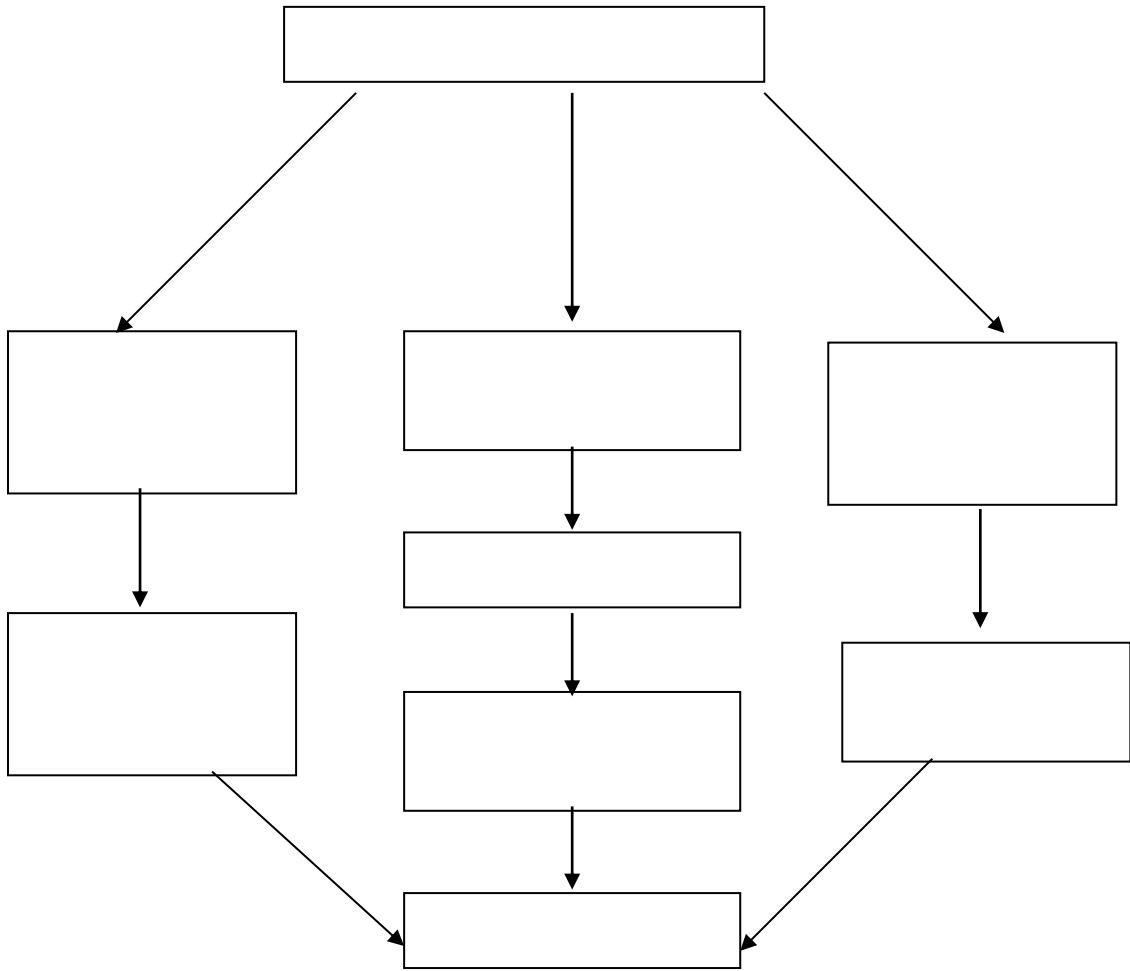
责任单位

10

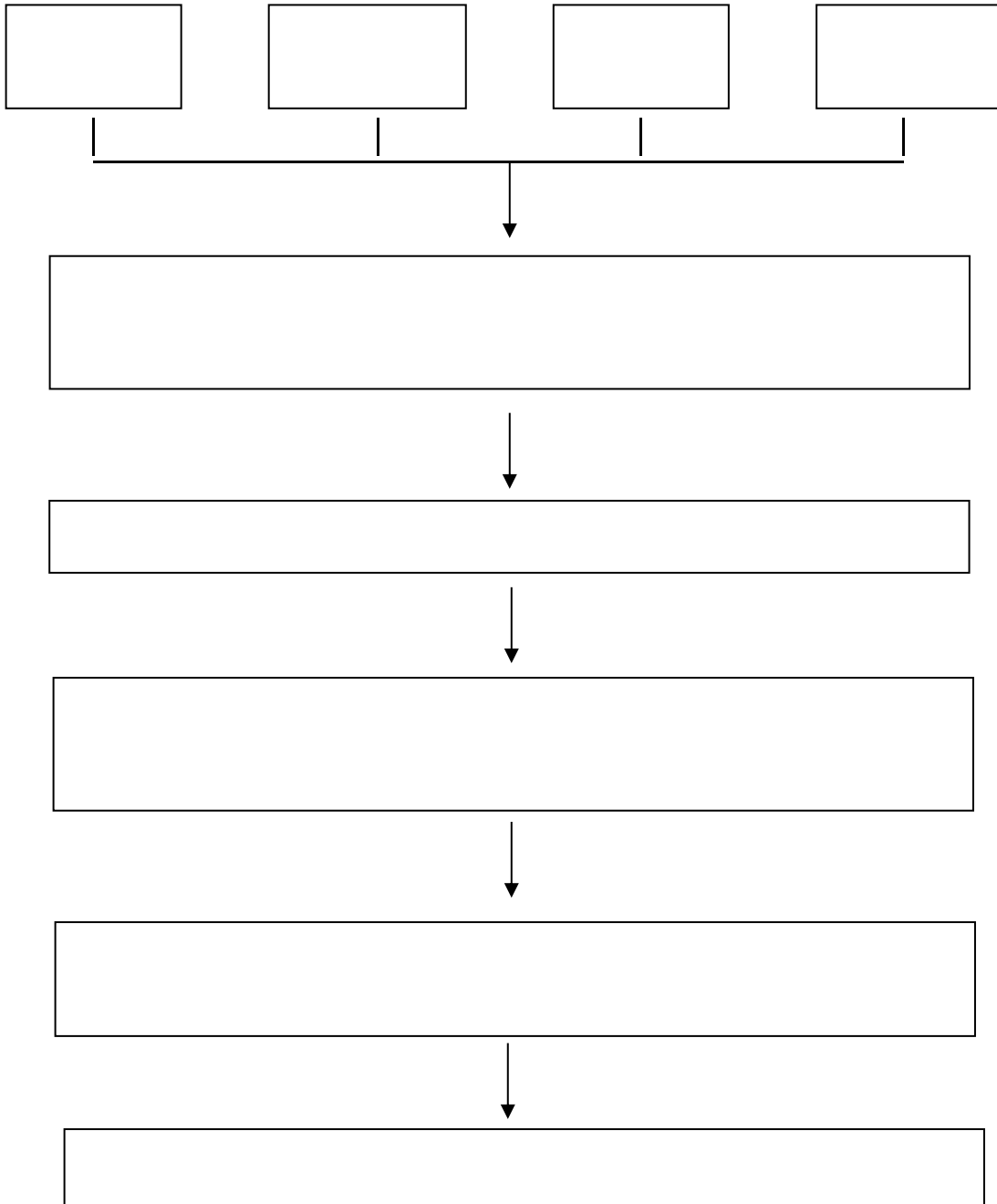
11

12--14

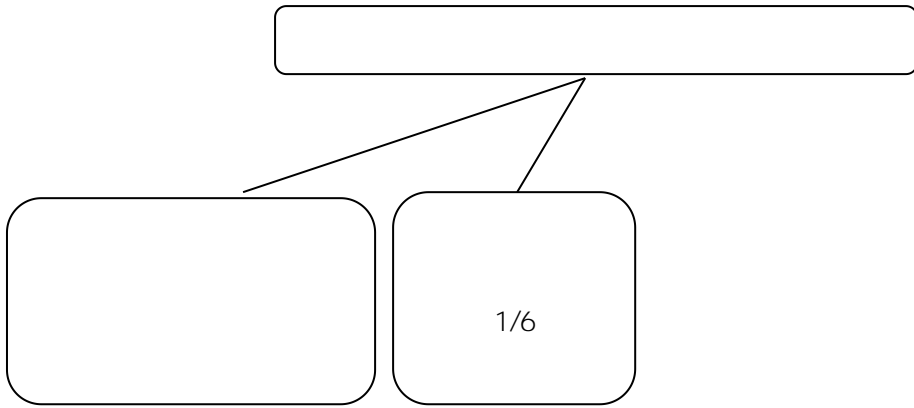
教室管理相关流程图



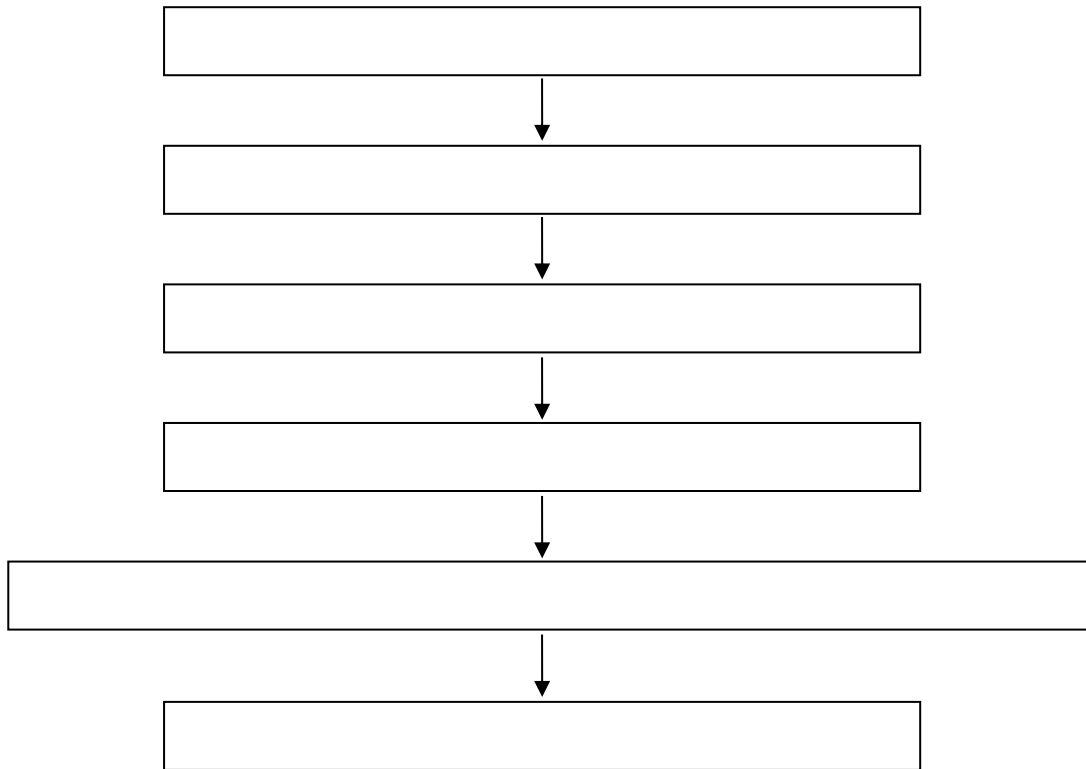
教学事故认定与处理流程图



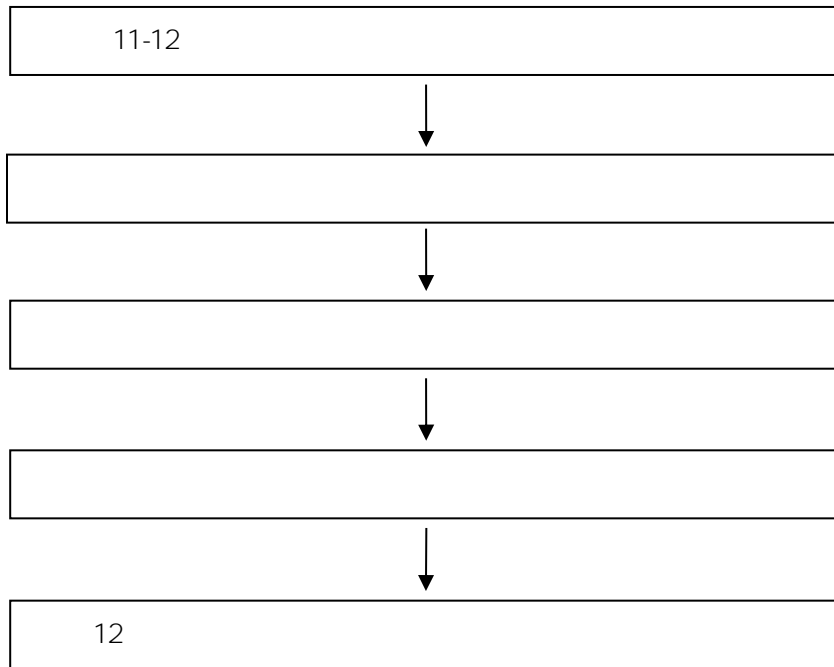
普通高等教育学士学位授予流程图



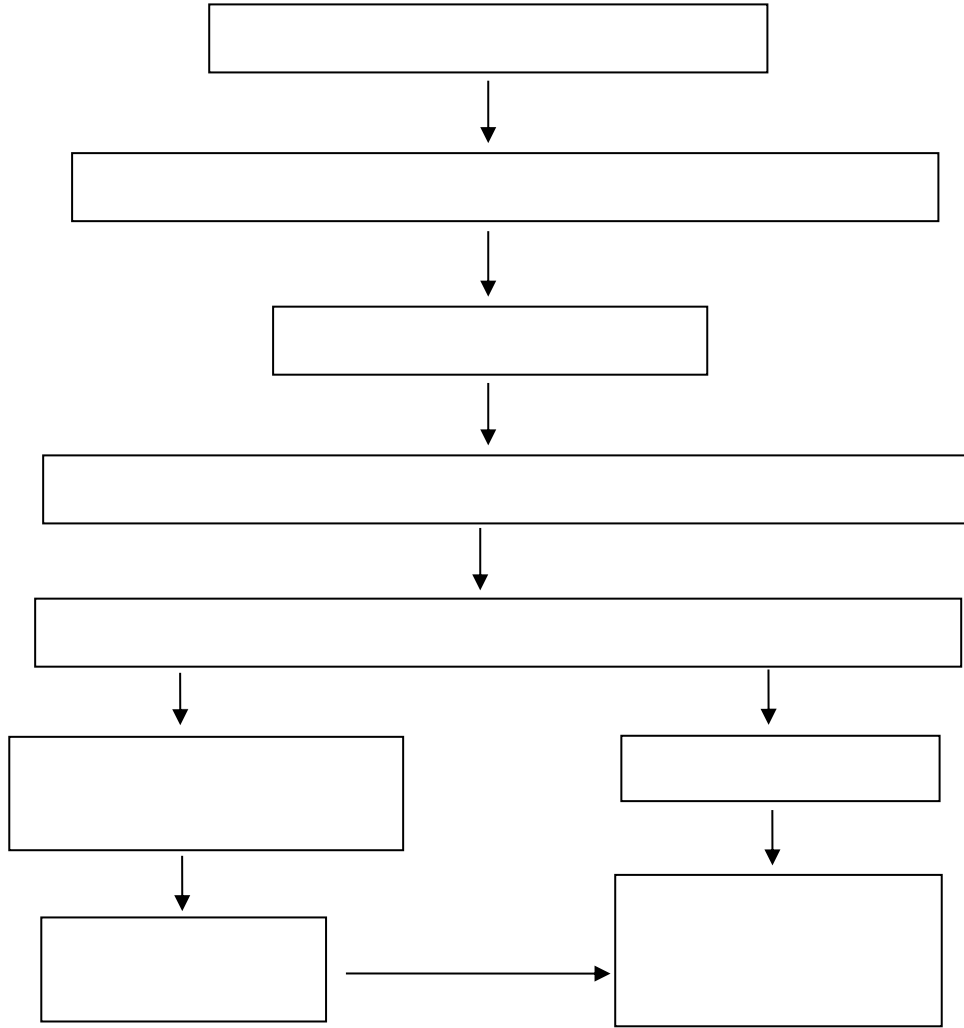
交流生面试组织流程



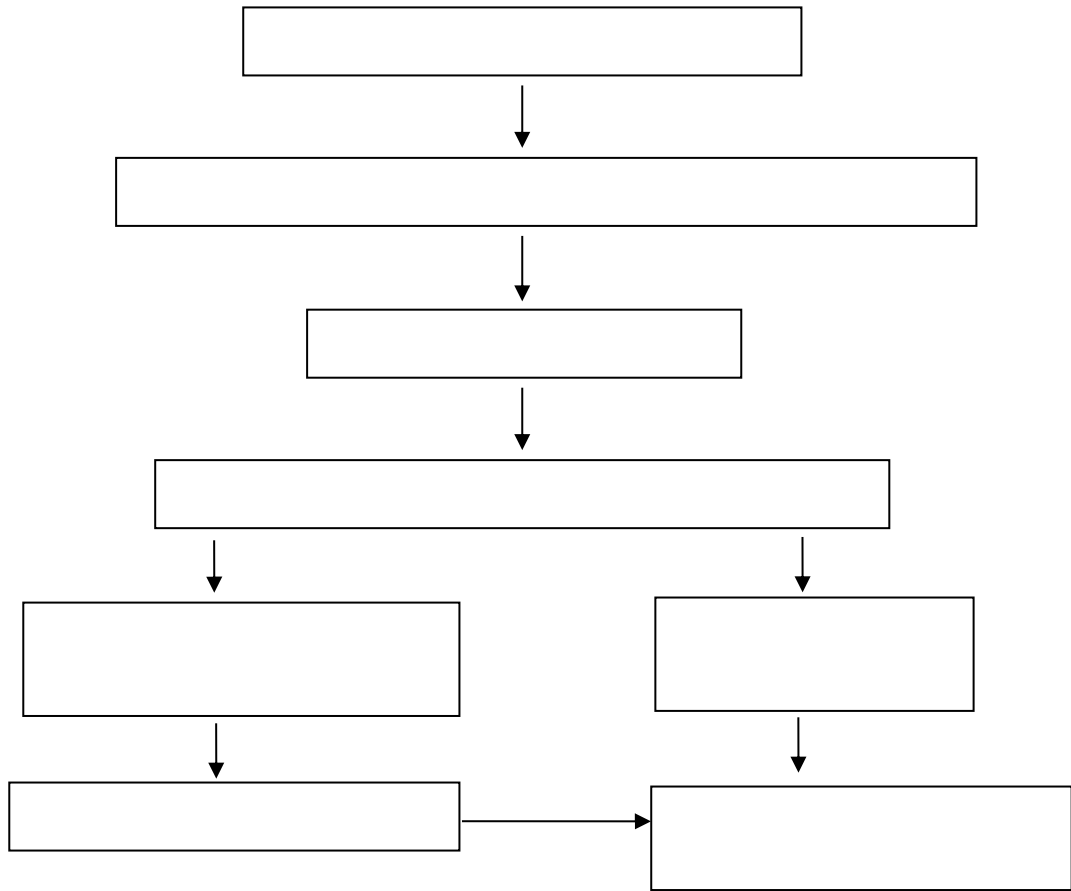
学生申请省级及以上学科竞赛奖励流程



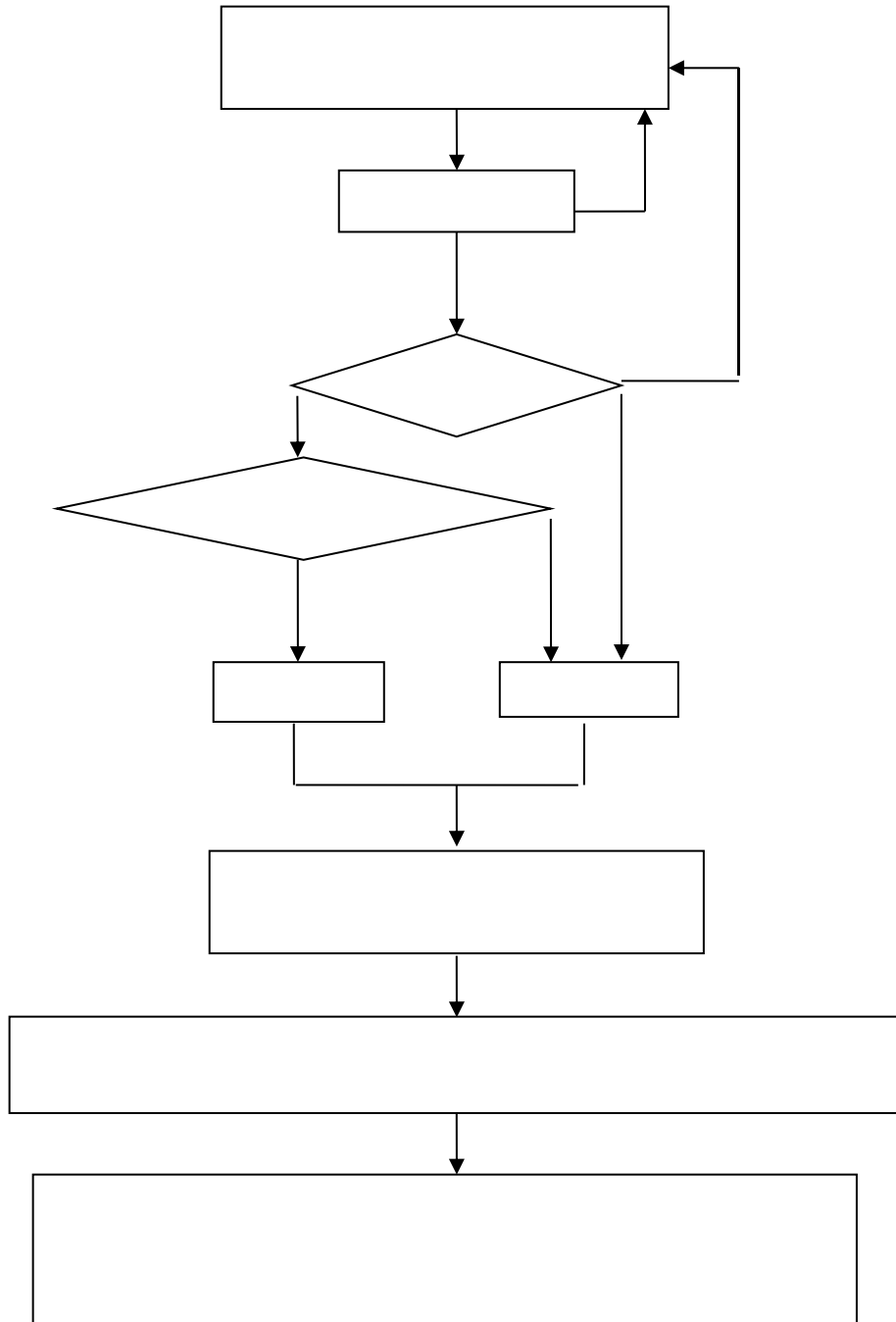
各类教改项目申报流程



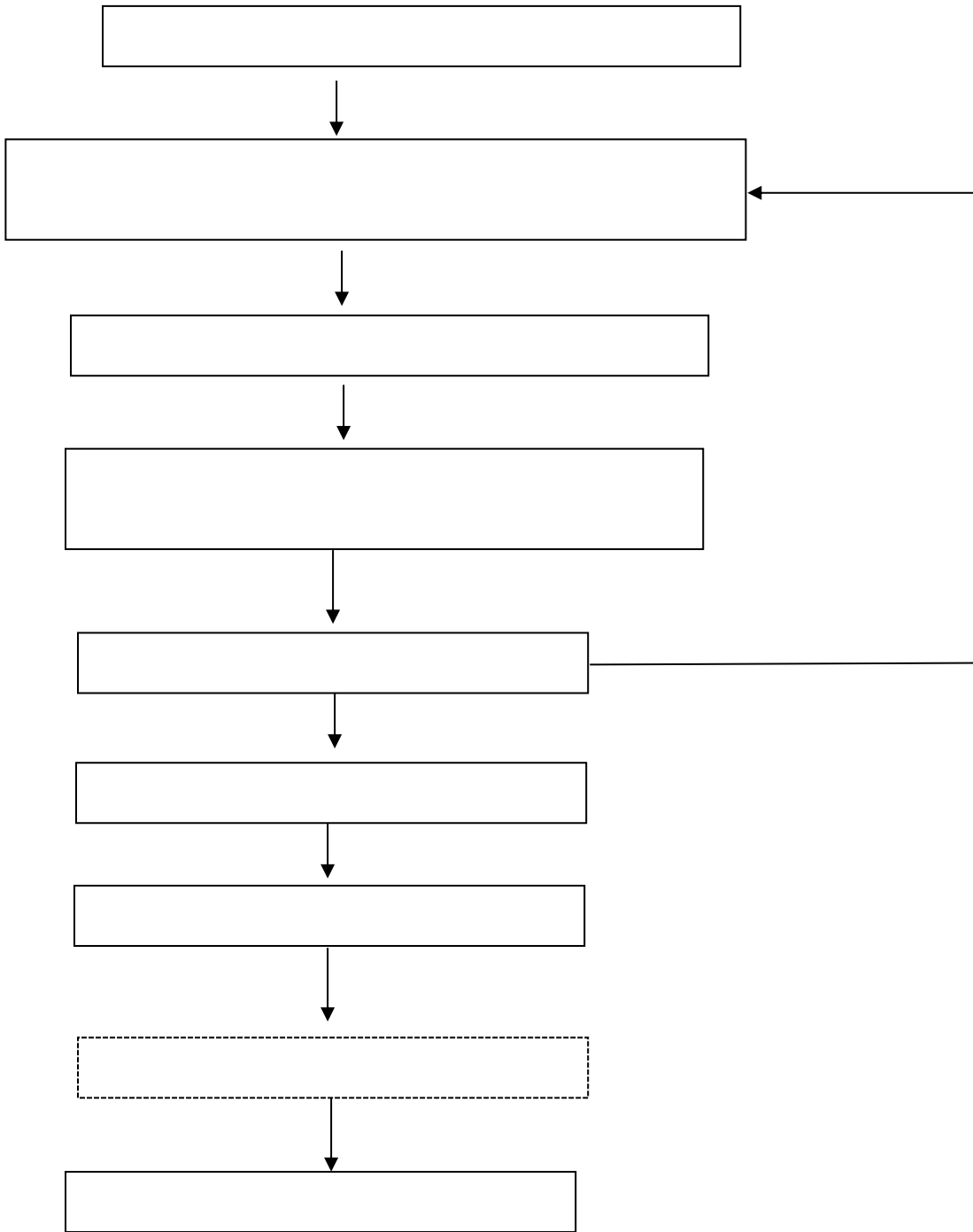
教学竞赛活动流程



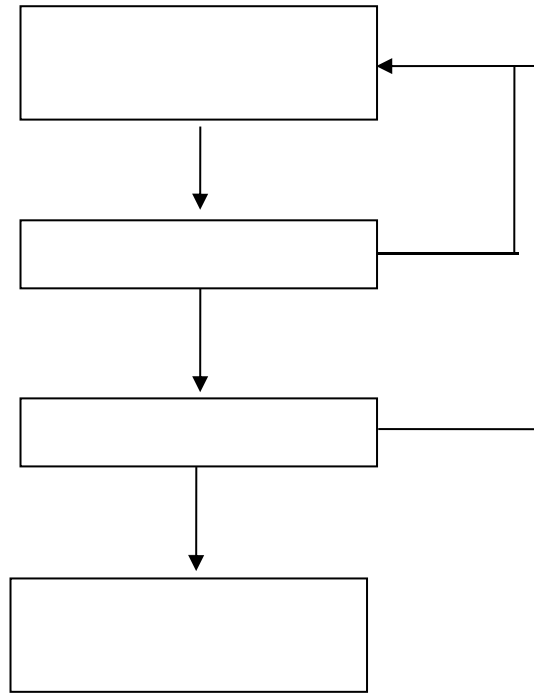
大学生创新创业训练计划项目管理流程图



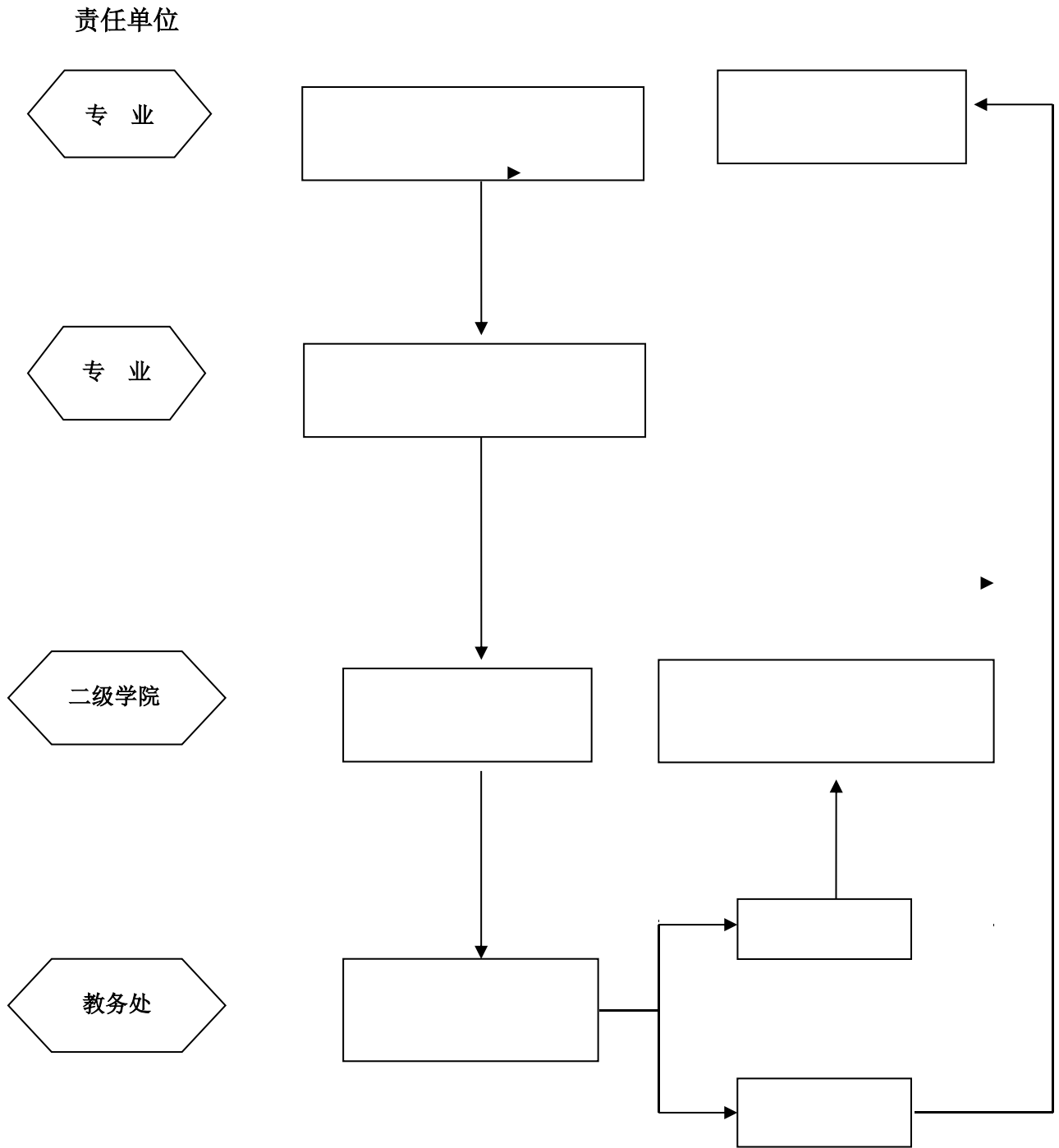
教学设备采购项目申报工作流程图



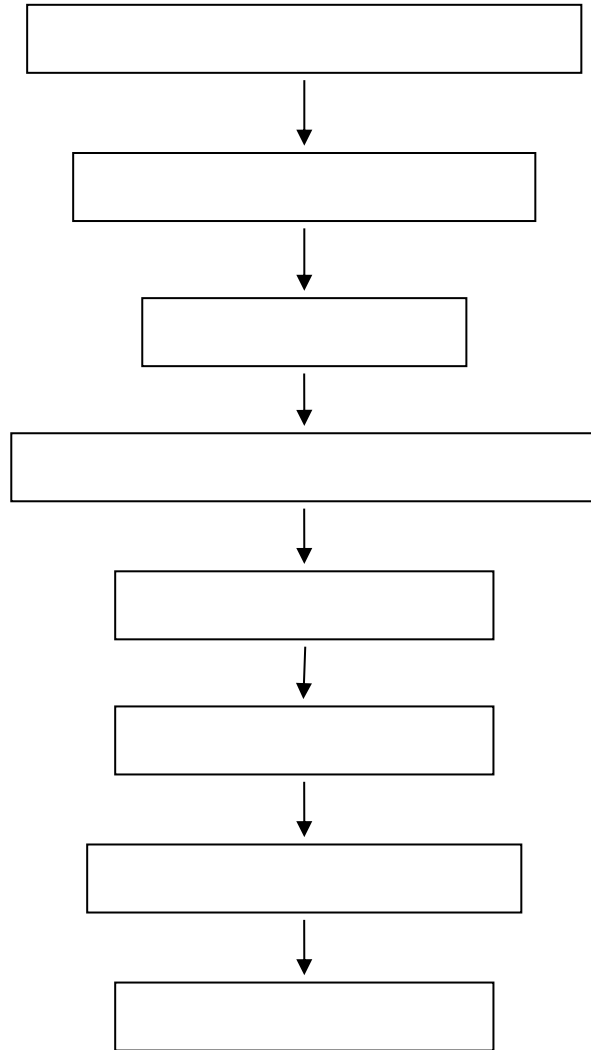
教学实验用房调配流程图



实践教学基地建设工作流程图



教材业务运行工作流程



教材采供管理流程图

